

Continuous Flight Auger Combating vibration



The solid solution

Continuous Flight Auger (CFA) piles, also known as Contiguous Grout Piles, are non-displacement piles used when vibration-free installation is required in dense ground conditions where sheet piling is unsuitable.

Projects that require a deep excavation along a property boundary but have neighbouring buildings that are sensitive to vibration require a sensitive response.

ASP can provide CFA piles as the boundary excavation support.

Methodology

CFA Piles are formed by first drilling into the dense ground conditions with a continuous flight auger. Cement-sand grout or concrete is then injected through the auger's hollow stem as it is being withdrawn.

A reinforcing cage is placed into the grout or concrete. Depending on the depth of the excavation, the piles may require anchoring.

ASP's goal is to provide the most practical, efficient and economical solution to the builder's requirements.

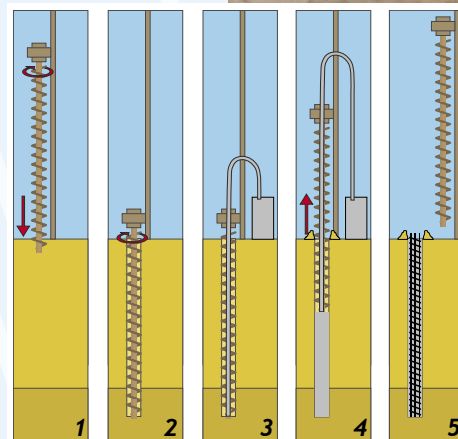
Advantages

No Ground Disturbance

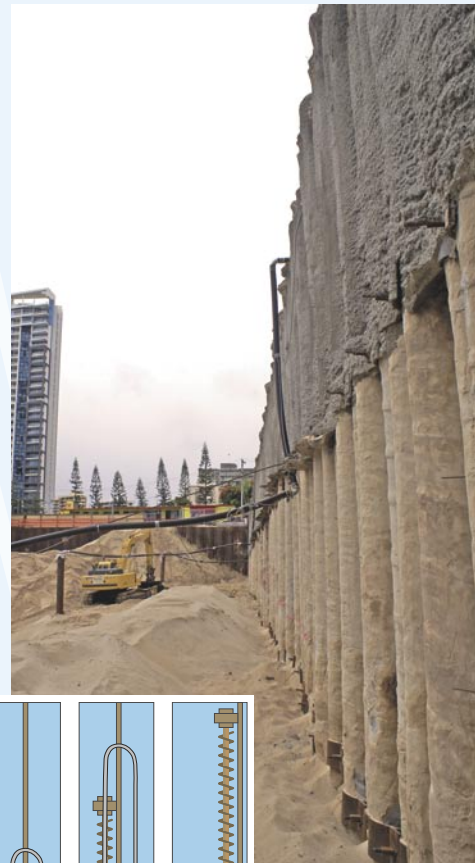
CFA uses no vibrating plates so reduces the risk of structural vibratory damage often caused to neighbouring buildings when installing sheet piles.

Final Finish

A spray concrete finish can be applied directly to the piles to give a true and vertical finish.



Above: CFA process - 1&2 Drill; 3&4 pump in concrete while withdrawing auger; 5 insert reinforcing mesh.



**Australian
Sheet Piling
Pty Ltd**

**PO Box 110
Ashmore City
Qld 4214**

**Phone
(07) 5594 9607**

**Fax
(07) 5594 9048**

ausheet.com.au

The in-ground experts

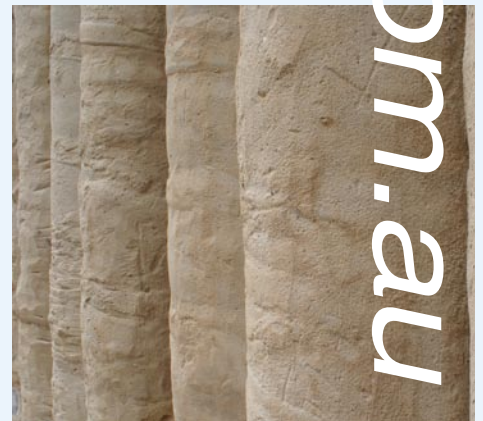


ausheet.com.au

Continuous Flight Auger



Above: CFA piles demonstrate their value in extremely close proximity to an occupied neighbouring dwelling.



Above: A new block wall was able to be erected immediately, preserving privacy and safety for next-door residents.

Right: A further example of the worth of CFA in combatting vibration when other structures are close by.

