

# Pre-Cast Panels

## Rapid installation



Below: Showing pre-cast panels being jetted into place.



## Advantages

### *Efficient*

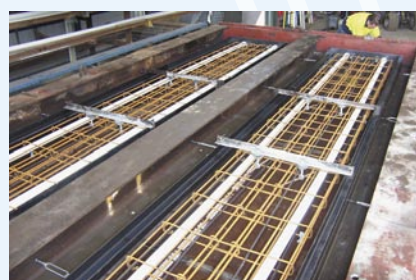
Pre-cast panels ensure better quality control than poured in place systems or rock wall structures due to the rigours of the marine environment.

### *Quick*

Pre-cast Wall Systems can be installed efficiently with various ranges and sizes available. Installation of the panels by water jetting is rapid and efficient.

### *Good Looking*

Pre-cast panels are immediately aesthetically pleasing, requiring no extra finishing, and are topped with capping beams that at once protect the panel ends and provide a pleasing appearance.



## Longevity in tough conditions

ASP now offers pre-cast manufacturing solutions for ground retention including revetment walls.

Our pre-cast panels are custom manufactured at ASP's facilities, as are capping beams. Capping beams can also be cast on-site for special applications.

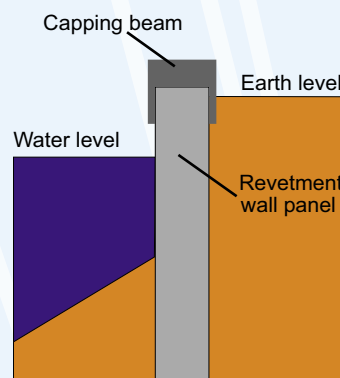
ASP pre-cast panels include jetting pipes for rapid, one-step installation. The process provides longevity and corrosion resistance in marine environments as well as an aesthetically pleasing finish.

ASP boasts many years experience in manufacturing custom pre-fabricated concrete solutions for all kinds of applications. Major builders and developers rely on Australian Sheet Piling's concrete casting service for a fast, reliable and permanent retaining solution.

## Methodology

Steel sheet piling is driven in the water area parallel to and beyond the proposed panel installation line and dewatering used to prepare the line for installation of the pre-cast panels. The line is then surveyed ready for panel installation.

ASP's high quality interlocking pre-cast panels are positioned through the use of a guiding rig and are driven into position by means of water jetted through pipes running internally through the length of the panel. Once the panel has been jetted into position, the water jet head is detached and the guiding rig is repositioned for the driving of the next panel.



**Australian Sheet Piling Pty Ltd**

**PO Box 110  
Ashmore City  
Qld 4214**

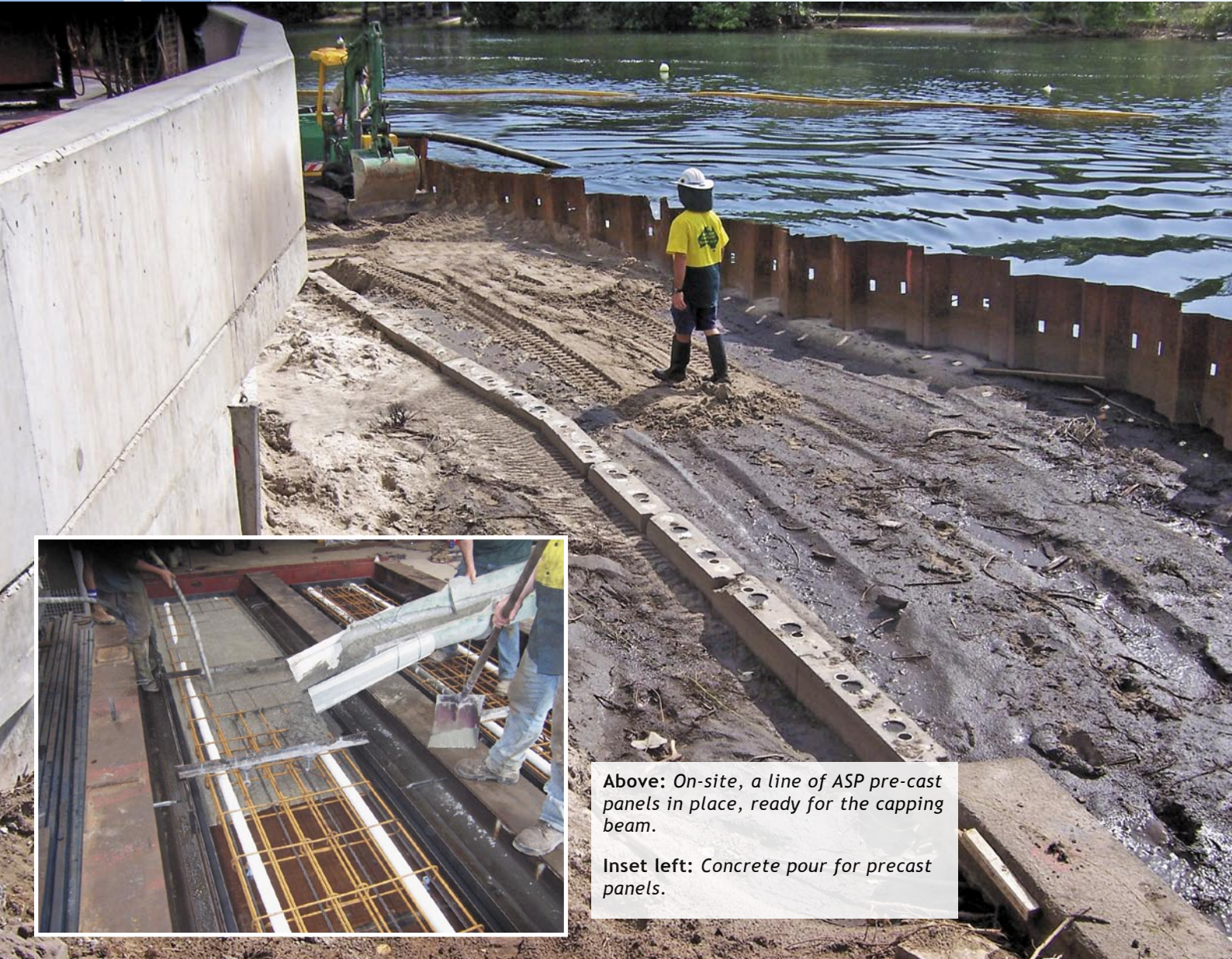
**Phone  
(07) 5594 9607**

**Fax  
(07) 5594 9048**

**ausheet.com.au**

**The in-ground experts**

# Pre-Cast Panels



*Above: On-site, a line of ASP pre-cast panels in place, ready for the capping beam.*

*Inset left: Concrete pour for precast panels.*

*Right: Concrete pour in progress.*

*Below right: Finishing the first panel while preparing to pour the second.*

*Far right and inset: Replacement of a decades old section of revetment wall at Pacific Fair, Gold Coast.*

