

# Revetment Walls

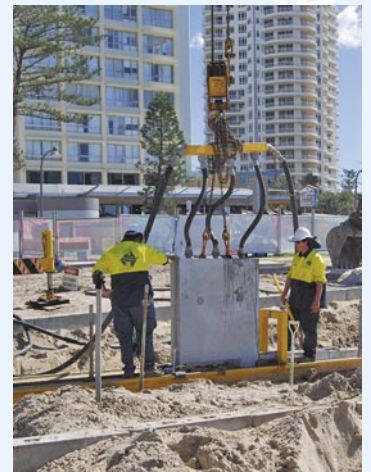
## Pre-cast system

### Protection from erosion

A revetment wall is a permanent structure designed to prevent the types of subsidence that commonly occur adjacent to all waterways and the ocean. By definition, it is a protective covering on an embankment of earth designed to maintain the slope or to protect it from erosion.

Revetment walls are built to local council requirements along the council's revetment regulation line which is determined by a waterways search. In general, property owners are responsible for maintaining revetment walls that benefit their land. Like all structures, a revetment wall has an engineered design life and requires regular and proper maintenance to prevent structural deterioration.

Preventative maintenance, including routine inspections by a suitably qualified engineer, will extend the life of the wall and prevent structural failure. The Revetment Wall System employed by ASP uses pre-cast concrete panels for a quick and high-efficient build.



Above: Getting ready to position a panel at the Surfers Paradise Foreshore Redevelopment project.

### Advantages

#### Efficient

Pre-cast panels ensure better quality control than poured in place systems or rock wall structures due to the rigours of the marine environment.

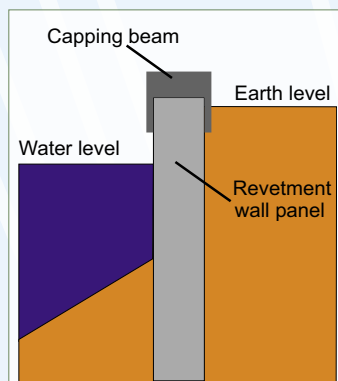
#### Quick

Pre-cast Revetment Wall Systems can be installed efficiently with various ranges and sizes available. ASP recently constructed revetment walls for the Surfers Paradise Foreshore Redevelopment.

### Methodology

Steel sheet piling is driven in the water area parallel to and beyond the proposed revetment regulation line and dewatering used to prepare the line for installation of the wall panels. The line is then surveyed ready for panel installation. High quality interlocking pre-cast panels are positioned through the use of a guiding rig and are driven into position by means of water jetted through pipes running internally through the length of the panel. Once the panel has been

jetted into position, the water jet head is detached and the guiding rig is repositioned for the driving of the next panel. Once the revetment wall is in place and the rock or scour zone is in place, the steel sheet piles are then removed, allowing the concrete wall to function correctly along the revetment regulation line.



**Australian Sheet Piling Pty Ltd**

**PO Box 110  
Ashmore City  
Qld 4214**

**Phone  
(07) 5594 9607**

**Fax  
(07) 5594 9048**

**ausheet.com.au**

**The in-ground experts**



# Revetment Walls



**Above:** First in this sequence of photographs from the Little Beach Project at Paradise Point, Queensland, we see the partially completed revetment wall with dewatering taking place between the wall and the temporary line of sheet piling. The top edge of the wall is finished with capping beams.

**Left:** Lifting a panel to the revetment line. The capping beams that top the wall can be seen in the foreground.



**Above:** The water jetting head attached to the top of the panel prior to lifting.

**Left:** Guiding the lifted panel into the rig prior to jetting into final position.



**Above:** Jetting the panel into position.



**Above:** Removing the jet rig and lifting tackle.

