

Soldier Piles

An alternative retention system



A flexible answer

Soldier Piling is a form of ground retention used when ground conditions comprise of stiff soils or clays, and it is not practical to drive light weight sheet piling in the ground conditions that exist on site. Soldier Piles can be used to support temporary excavations in clay type stratum or as a permanent wall section.

The Soldier Pile System is determined by soil test data and the method of construction required by the client, in conjunction with the advice of ASP's consultants and engineers.

Methodology

The line of shoring is marked for installation of soldier piles. Holes are drilled at spacings determined in conjunction with the site soils consultant around the perimeter of the proposed basement excavation. Columns are then placed in these holes to an engineer-approved depth beneath the excavation level. The bases of the columns are then cast in grout-crete.

The excavation is carried out in a 'hit and miss sequence'. A controlled vertical face is excavated between 2 consecutive soldier piles. Mesh reinforcement is tack welded between the soldiers and a shotcrete spray is applied to secure the section of retaining wall.

Timber sleepers may be utilised in soldier pile systems to stabilise non-cohesive (granular) strata which cannot 'stand up' temporarily by itself. Timber sleepers prove to be both cost effective and efficient to install due to a quick installation process. Availability of timber sleepers is also advantageous, as to other in-fill products.

Advantages

Cost-Effective

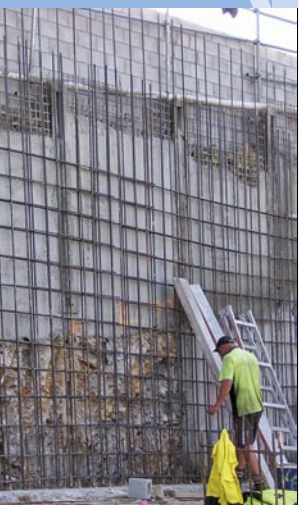
Soldier Piles can be a cost-effective solution to your retention requirements. Based on the soils report, Soldier Piles are often the best alternative option for clay and low strength rock profiles, where light weight sheet piling would be inefficient.

Flexible Solution

ASP seeks the most cost-effective and efficient retention system for the client, while working in conjunction with your site restraints and construction processes.

Quiet

Soldier Pile systems can be installed with little disturbance to neighbouring properties, allowing the client piece of mind.



**Australian
Sheet Piling
Pty Ltd**

**PO Box 110
Ashmore City
Qld 4214**

**Phone
(07) 5594 9607**

**Fax
(07) 5594 9048**

ausheet.com.au

The in-ground experts



Soldier Piles

www.aushsheet.com.au



Above: The use of a soldier pile wall to a clay and rock profile excavation.

Right: Shotcrete being applied as a finished wall over a soldier pile wall.



Above: Steel reinforcing used prior to applying a finished spray wall.

Right: Soldier pile wall faced with shotcrete.

